



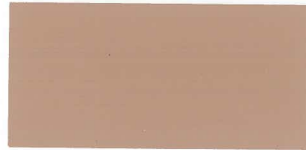
1702 Peninsula Drive • Erie, PA 16505-4243  
P.O. Box 8370 • Erie, PA 16505-0370  
PH: 814/833-1154  
FX: 814/838-3473  
E-mail: info@generalpartitions.com  
generalpartitions.com

We utilize the finest quality synthetic enamel. The exclusive use of Galvanized Bonderized steel for all baked synthetic enamel ensures extended partition life. Periodic washing with mild soap and an occasional waxing with a good automotive wax will keep the finish looking new for years.

## STANDARD COLORS



**ALMOND**  
SW-237



**TAN**  
SN-548



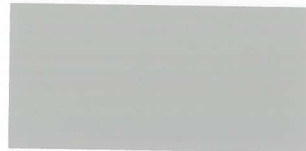
**SAND**  
SN-336



**MAUVE**  
SR-485



**ADMIRAL BLUE**  
SB-415



**FASHION GREY**  
SA-386



**CADET BLUE**  
SB-382



**HUNTER GREEN**  
SI-567



**BURGUNDY**  
SO-715



**MIST GREY**  
SA-401



**TERRA COTTA**  
SR-118



**RED**  
SR-455



**AUTUMN BROWN**  
SN-409



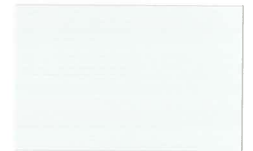
**ROYAL BEIGE**  
SN-248



**TEAL**  
SI-575



**BLACK**  
E-36



**WHITE**  
SW-20A

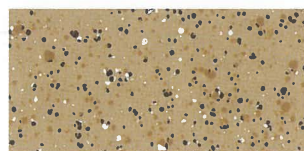
## TEXTURED COLORS



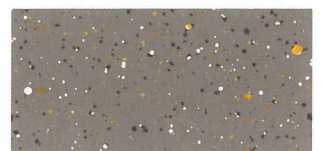
**SILVER VEIN**  
SV-936



**PENNY VEIN**  
PV-948



**SANDSTONE**  
SS-338



**GREYSTONE**  
GS-403

All orders include choice of 2 standard colors at no extra charge.  
Orders over 15 compartments: 3 standard colors at no extra charge.  
Orders over 20 compartments: 4 standard colors at no extra charge.  
Extra color charge, \$50.00 for each color exceeding the color per compartment limit.

Actual colors and/or textures may vary from those shown due to limitations of the production process. Please request actual sample for absolute color fidelity.